



Dongguan Chang'an TaiQi
Machine Factory

What we are?

Dongguan Chan'an Taiqi Machine Factory is high-tech machinery and equipment manufacturer specializing on the research, development, production, and sales service of Tapping Machine, Laser Marking Machine and Laser Welding Machines. It was established in Taiwan at 1980's. Mainly producing Pneumatic & desktop tapping machines at the beginning. With the vigorous development of the company. Now Created “Taiyi” brand. Factory area of 8000 square meters, more than 200 excellent staffs and smart team. Taiyi has established a good strategic cooperative partnership With Huazhong University of Science and Technology in Optical Valley, Wuhan, China. Taiyi now become comprehensive product suppliers who supply dozens of laser machine series such as Laser Marking/Engraving Machine, welding machine, cutting machine, Automatic line jig and flowing production line etc.

After five years of fierce market competition, Taiyi grows web marketplace, Products have been adopted by more than one thousands of large and medium-sized enterprises around the world, including North America, Europe, Southeast Asia and has established strong partnership with domestic famous enterprises such as CSR Corporation Limited, TCL, Skyworth electronics, Honda, Haier group, Yuchai machinery, Midea group, Yutong bus, cosco group etc. Products are highly praised by both our old and new customers.

From global procurement of raw materials to the elaborate device, development, design, production, packaging, transportation to distribution, Well trained Taiyi people control each process strictly in the production, through the continuous sampling, detection, tracking, and other measures, to ensure that products meet the expected performance goals. Therefore, High quality of Taiyi's products is our constant faith and commitment.

In order to better serve our customers all over the world, Taiyi , One after another, Taiyi has established its branch offices in Hongkong, Taiwan, Shenzhen, Shanghai, Tianjin, Jiangsu, Wuhan, India, Egypt, Turkey, Thailand and Singapore. To improve service quality further Taiyi plans to have more offices over the world in the next few years, Taiyi's product positioning in the high-end laser series market and ensure the best quality products and services to our partners, to build long and succeed business relationship with home and abroad customers.

We are the manufacturer of below products

❖ **Laser Marking Machines**

-Fiber laser marking machine for metal and plastics

(Colourful marking on stainless steel, Black marking on Aluminium, Deep engraving, Print on the surface)

-Co2 laser marking machine for non-metals

(Surface marking, Deep engraving, wood marking or engraving, Fabric cutting, Ceramic Marking)

-Uv laser marking machine (Delicate marking on the transparent plastics)

Offering **Customized** automatic solution for you in **FREE**

Fiber laser marking machine



Stand version



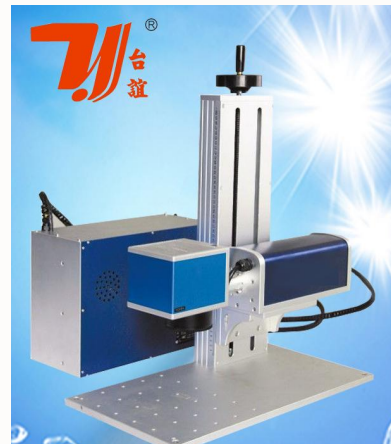
Portable version



Online-flying version



Handheld version



Portable version 2



Technical Data

Model	TY-G808 Fiber Laser Marking Machine
Laser Power	10W/20W/30W/50W optional
Working Area	110*110/170*170*220*220/300*300 optional
Cooling mode	Air Cooling
Laser Wavelength	1064nm
Minimum character	0.15mm
Marking speed	≤8000mm/s
Focus lamp	Singapore, beam length 110*110
Beam quality	M2≤2
Beam repeating frequency	20khz-100khz
Life of laser producer	100,000Hours
Supported fonts	Support any text on Internet
Supported formats	DWG、DFX、BMP、JPG、PNG、TIF、PCX、TAG、GIF、PLT
Precision of repeating	±0.002mm
Power consumption	≤500W
Power	Ac220v 50/60Hz

Optional Accessories



Hand held laser path



Seperate laser path



Rotary Axis





2D Alloy Table



Automatic flowing line (customized according to product)

Application

-  Any metal includes rare metal, construction consumes, products with laminate, spraining and furnishing tools, plastic and rubber products and so on.
-  Widely applied for the industries of electronic components, IC, Electric tools, Telecommunications, Sanitary ware, Tools and accessories, taps and mills glass and auto parts, Jewelry and so on.

Marked samples' show



Barcode



Battery



plastic tags



LED



Aluminium



Embossing



Colourful marking



Scale



Electrics

CO2 laser marking machine



Stand Version



Portable Version



Flying Version

Model	TY-G908 CO2 Laser Marking Machine
Laser Power	10W/30W/50W /75W/100W/150W optional
Working Area	110*110/170*170*220*220/300*300 optinal
Cooling mode	Air Cooling/water cooling
Laser Wavelength	10640nm
Minimum character	0.15mm
Marking speed	≤7000mm/s
Laser beam expanders	Singapore, 4x*6x
Focus lamp	Singapore, 110*110mm optional
Beam quality	M2≤2
Beam repeating frequency	1khz-100khz
Life of laser	20,000-30,000Hours
Supported fonts	Support any text on Internet
Supported formats	DWG、 DFX、 BMP、 JPG、 PNG、 TIF、 PCX、 TAG、 GIF、 PLT
Precision of repeating	±0.002mm
Power consumption	≤500W, 2000W for 150W
Power	Ac220v 50Hz

Machine Parts



Co2 laser



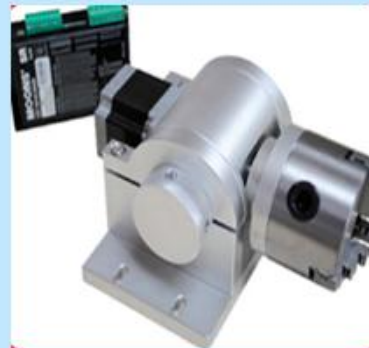
EZ CAD Marking Card



Scanner



2D Alloy Table (optional)





Rotary Axis (optional)



Field Lens (optional)

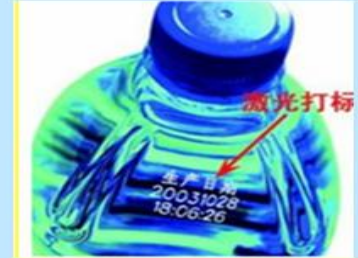
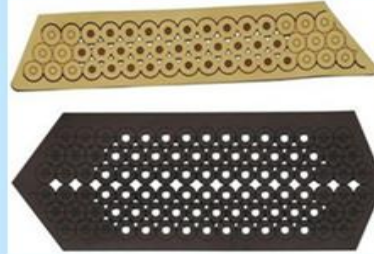
Application

-  Marking for Non-Metal material bases, like leather, fabric, wooden, bamboo base, paper, glasses, plastic, acrylic etc.
-  Widely applied for the industries of medicine, packing, leather products, garments, wooden product, craft works.

Marked samples' Show



Ceramic



Plastic film



Glass bottle



Leather shoe



Wooden box



Stones marking



Cork engraving

53 1 12

UV laser marking machine



👉 Application

- 👉 Mainly applied on internal or surface engraving, such as mobile phone screen, LCD, optical device, transparent parts etc.



Plastic film



Wooden box





Thank you for focus

The Specialist of Machine manufacturer

www.taiyilaser.com

Tel: +86 769 3893 9577